

What is the details of our LED Garden light?

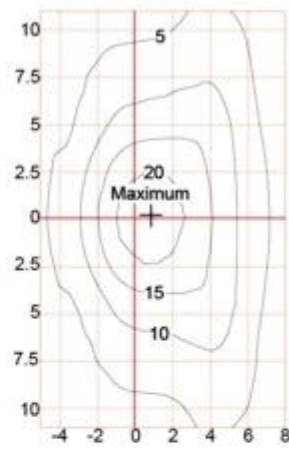
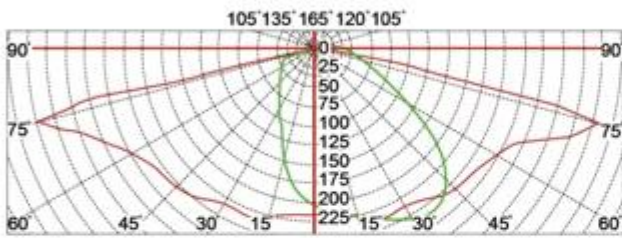
□□ □□ □□□□ □□□
□□ □□ □□□
□□□ □□ □□□
□□ □□ □□□ □□
NEMA □□ □□

Configuration Data:

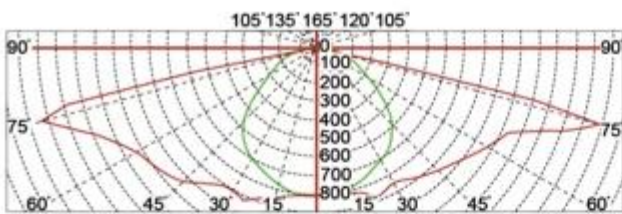
□□ □□	□□ □□	LED □□	□□□□ □□□	G.W/N.W	□□ □□	□□ □□
YMLED-6145(16)	30W	16	3900	7.1/5.6(kg)	560*560*220mm	320PCS/20" GP
YMLED-6145(20)	40W	20	5200	7.1/5.6(kg)	560*560*220mm	840PCS/40"HQ
YMLED-6145(24)	55W	24	7150	7.1/5.6(kg)	560*560*220mm	
YMLED-6145(28)	60W	28	7800	7.1/5.6(kg)	560*560*220mm	
YMLED-6145(32)	70W	32	9100	7.1/5.6(kg)	560*560*220mm	
YMLED-6145(36)	80W	36	10400	7.1/5.6(kg)	560*560*220mm	
YMLED-6145(40)	90W	40	11700	7.1/5.6(kg)	560*560*220mm	
YMLED-6145(44)	100W	44	13000	7.1/5.6(kg)	560*560*220mm	
YMLED-6145(48)	105W	48	13650	7.1/5.6(kg)	560*560*220mm	

Polar Diagram:

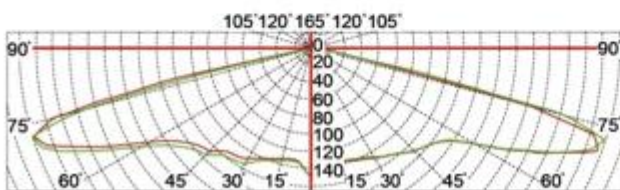
Type1



Type2



Type3





YMLED6145

RAL 7015



RAL 9005



Power range: 30w-105w

AC120v-277v 50/60Hz

CREE XTE LED chip

INVENTRONICS driver

Die cast aluminum housing

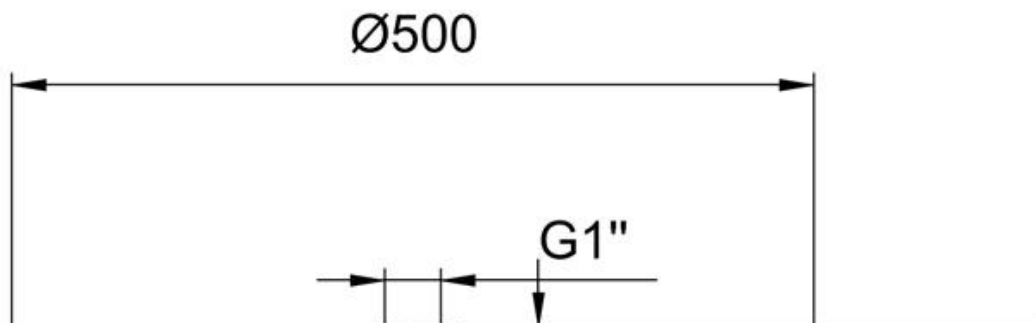


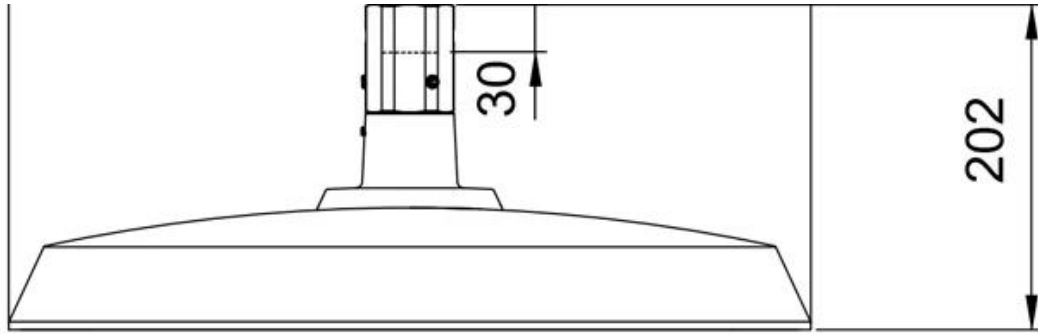
IP65

Certificate



Product Dimensions(mm)





Configuration Data:

Internal Structure

Die cast aluminum housing

Tempered glass

CREE XTE LED chip

Install pipe D76mm

