

What is the details of our LED Garden light?

产品说明：

旋压外壳

二次配光技术

抗 UV PC 灯罩

整体密封结构

Product description:

Spinning aluminum housing

Double photometric diffuser technology

UV-stop PC lamp cover

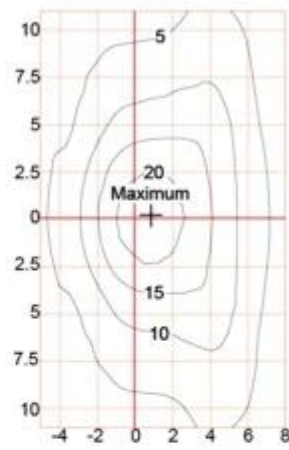
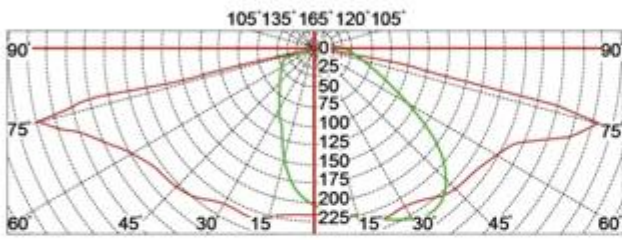
Sealed lamp housing

Configuration Data:

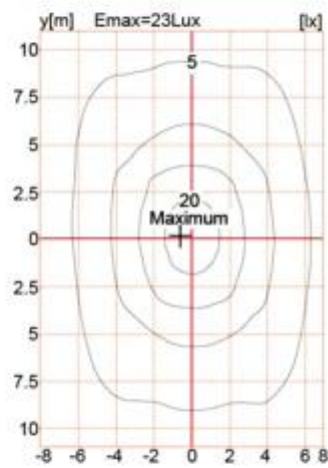
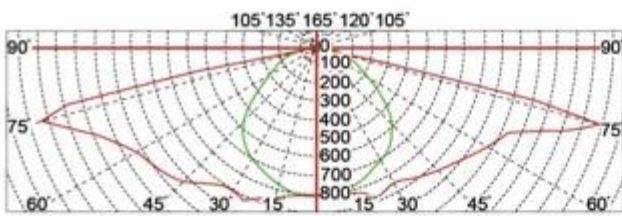
Product Code	Rated Power	LED Qty	Luminous Flux	G.W/N.W	Packing Size	Loading Qty
YMLED-6139(16)	35W	16	4200	8.6/7.6(kgs)	600*600*540mm	108PCS/20'GP
YMLED-6139(20)	45W	20	5400	8.6/7.6(kgs)	600*600*540mm	228PCS/40'HQ
YMLED-6139(24)	55W	24	6600	8.6/7.6(kgs)	600*600*540mm	
YMLED-6139(28)	60W	28	7200	8.6/7.6(kgs)	600*600*540mm	
YMLED-6139(32)	75w	32	9000	8.6/7.6(kgs)	600*600*540mm	

Polar Diagram:

Type1



Type2



Type3

